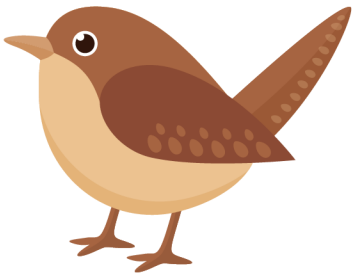


Benefits of Trees



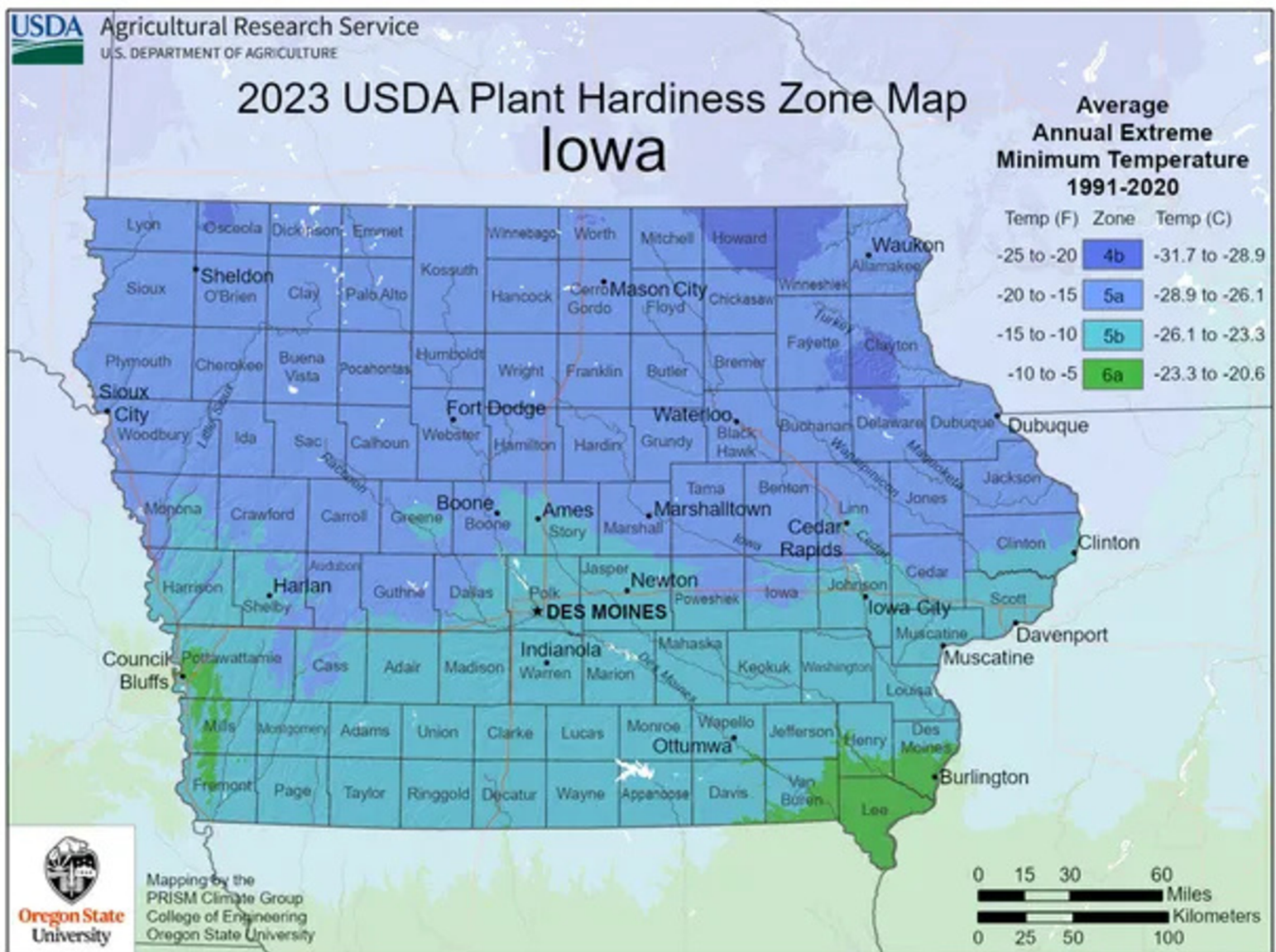
- **Reduce air pollution** such as ozone, nitrogen dioxide, and sulfur dioxide.
- Through photosynthesis, trees **remove carbon dioxide** (CO₂) from the atmosphere and **produce oxygen**.
- **Reduce stress and anxiety, lower blood pressure, and improve mood** (USDA, 2024).
- **Increase property value** and having established trees can increase home values by 3-15% (University Nebraska-Lincoln).
- **Provide habitats** for wildlife such as insects, birds, and small mammals.
- Trees help **manage stormwater** by capturing rainfall in their canopy, releasing water into the atmosphere through evapotranspiration, and improving soil infiltration with their roots and leaf litter.



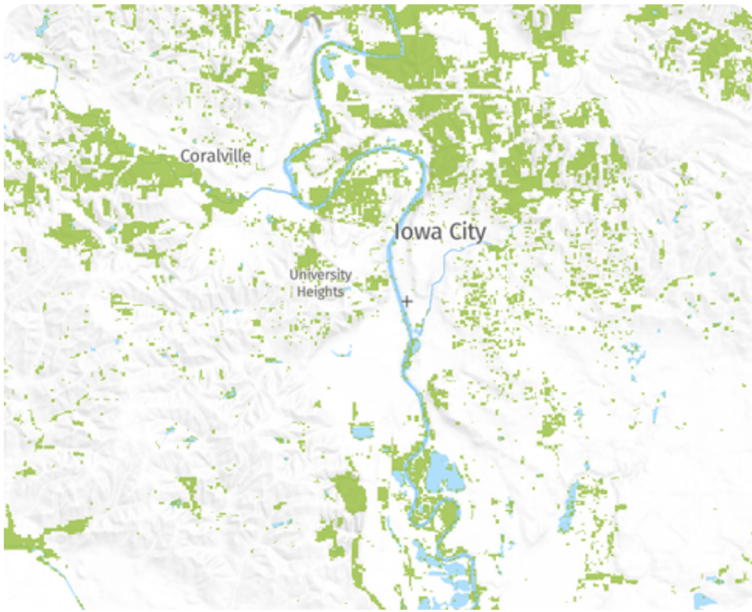
Plant Hardiness of Iowa

The USDA plant hardiness zones for Iowa range from 4b to 6a, with most of the state in zones 5a and 5b:

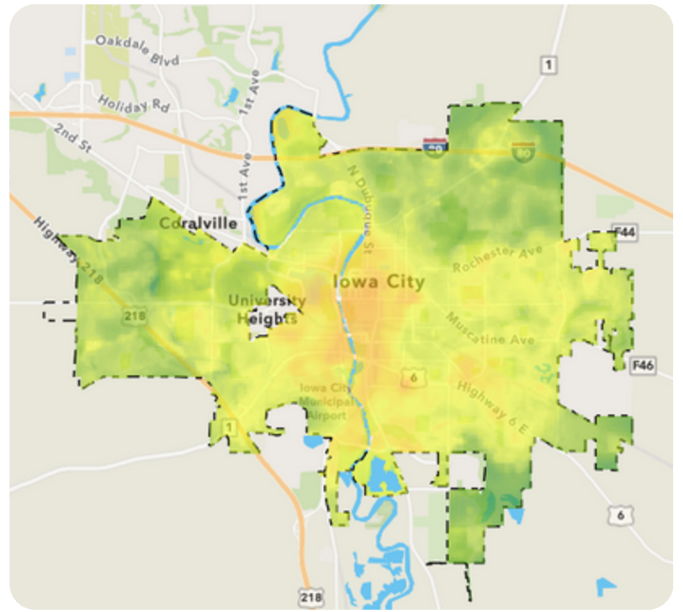
- Zone 4b: A small area in the northwest and northeast corners of Iowa
- Zone 5a: The northern half of Iowa
- Zone 5b: The southern half of Iowa
- Zone 6a: A few counties in the southeast and southwest of Iowa



Better Together



Tree Canopy
(>10% cover, 2010)



Relative Temperatures
(July 2023)

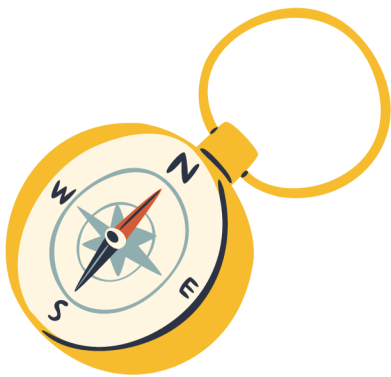
When a whole community plants trees, we all win. A healthy tree canopy provides:

- Cooler summers
- Less dry winters
- More predictable weather
- Cleaner air
- Enhanced Aesthetics
- Improved storm water management
- More diverse wildlife



Plant Trees, Save Money

- Strategically planting trees around your home can significantly reduce energy costs.
- Large deciduous trees on the east, west, and northwest sides provide shade that lowers summer air conditioning needs by up to 35% (Arbor Day Foundation, 2025).
 - **East:** Trees provide morning shade but have less impact on cooling costs due to cooler temperatures.
 - **South:** Trees planted within 40 feet of your home offer effective mid-morning and early afternoon shade (US Forest Service).
 - **West:** Trees block the hottest afternoon sun, maximizing energy savings. Combined east, south, and west plantings yield the greatest summer savings.
- Trees also act as windbreaks, reducing heating costs in winter (U.S. Department of Energy).



deciduous – trees that shed their leaves (oak, maple)

All the trees below are native to Iowa.

Monarch Research  Planting Forward

Fall 2023 Species Selection

★ Available in 3 gallon and 7 gallon size.



Images courtesy Texas A&M Forest Service



Credit: Johnson County Master Gardeners of Iowa